

# RD MODEL

# CM

Truck Beds



*Model may show options*

## STANDARD FEATURES

### AVAILABLE SIZES

8'-6" length  
9'-4" length  
11'-4" length

### DESIGN FEATURES & HARDWARE

All steel frame construction  
4" steel channel frame rails  
3" steel channel cross members  
1/8" steel tread plate deck  
Steel tubing headache rack with round  
"easy view" window grill  
Steel tread plate side with rub rail and  
stake pockets  
Steel tread plate solid rear skirt  
Angled fuel fill

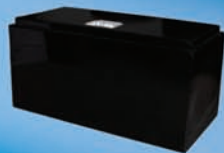
Removable 4" tall side rails

5" steel channel frame drop hitch with full access receiver  
mount and two punched safety chain holes  
Recessed gooseneck ball mounting box with easy  
access removable cover and two safety chain loops  
Premium TGIC Polyester powdercoating: black

### LIGHTS

Two recessed tail, brake, and back up lights mounted in  
headache rack  
Stop, turn, tail, back up, and tag lights in skirt  
DOT required lighting (clearance and marker lights)  
All lighting must be wired to meet all DOT requirements as  
originally intended by the vehicle manufacturer

## POPULAR OPTIONS



Tool Box



60" Tall Headache Rack



Gooseneck Trough

888-268-7577  
[www.cmtruckbeds.com](http://www.cmtruckbeds.com)

# RD MODEL



1. Recessed back up lights mounted in headache rack
2. Round "easy view" window grill
3. Premium TGIC Polyester powdercoating: black
4. Recessed gooseneck ball mounting box with easy access removable cover
5. Pull up safety chain loops
6. Durable 1/8" steel tread plate deck with 3" steel channel cross members and 4" steel channel frame rails
7. Bed corners tapered for turning radius on 9'-4" and 11'-4" length only
8. Steel tread plate solid rear skirt

9. Recessed 7-way and 4-way trailer light plug installed
10. Lighted recessed tag compartment
11. DOT required lighting
12. 5" steel channel frame drop hitch
13. Class IV 10 K receiver mount with two punched safety chain holes



14. Side rub rails with stake pockets and removable 4" tall side rails

Model may show options

**CM** Truck Beds.com



2008 CMTB 10/29.C

CM Truck Beds reserves the right to make any change in paint, design, or construction as necessary for engineering. All visual representation, specification, and dimensions are based on the latest product information available at the time of publication. Some of the equipment shown or described is available at extra cost. At no time will any of the material or information contained in this publication have any justifications for resolving disputes. For more information, call 580-795-5536 or toll free 888-268-7577, or write at 200 County Road, Madill, OK 73446 or via e-mail at customerservice@cmtrailers.com. Web site: www.cmtruckbeds.com