



SAF-HOLLAND's Light Commercial fifth wheels are intended for use in light commercial applications and gooseneck-type trailers. Various operating conditions, applications and loads may require a fifth wheel with greater capacities. Improper fifth wheel selection may result in unsafe operating conditions and/or maintenance problems. See SAF-HOLLAND's "Fifth Wheel Selection Guide," XL-FW447, or contact a SAF-HOLLAND representative to ensure that you select the proper Holland fifth wheel for your application and operating conditions.

## Applications:

*Specially designed for use with light commercial fifth wheel or gooseneck-type trailers.*

## Features:

Automatic primary and secondary lock engagement.

Lock release handle – easily accessible, conveniently located single action lock release with low operating effort.

## ACCESSORIES

For FW0001 and FW0002 Series Fifth Wheels



### KP-0030

Bed mounted, kingpin retractable.

# FW0001 SERIES FIFTH WHEELS

## Capacity:

8,000 lbs maximum vertical load  
32,000 lbs. maximum gross trailer weight

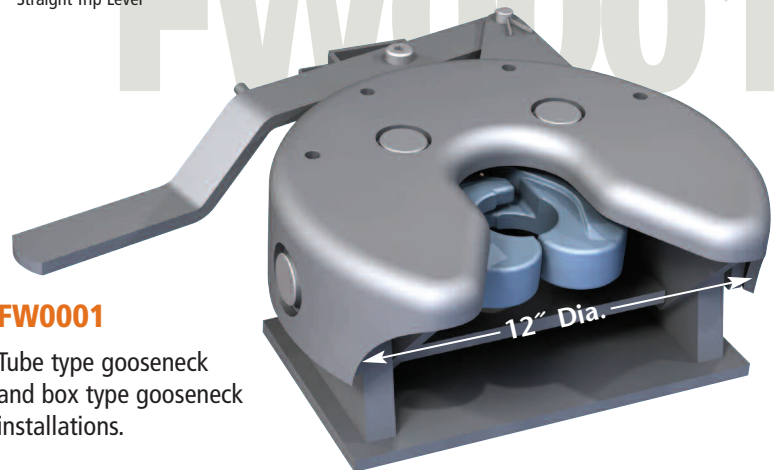
## Models Available

MODEL	NOMINAL F.W. HEIGHT	APPROX. WEIGHT
FW0001	5.50"	59 lbs.
*FW0001-100	5.50"	59 lbs.
FW0002-35	N/A	68 lbs.
*FW0002-135	N/A	68 lbs.
FW0002-40	N/A	68 lbs.
*FW0002-140	N/A	68 lbs.
FW0002-45	N/A	68 lbs.
*FW0002-145	N/A	68 lbs.

\* Straight Trip Lever



Safety lock handle  
Ductile iron locking block  
Ductile iron cast split locks



### FW0001

Tube type gooseneck and box type gooseneck installations.



**FW0002-35** (3.5" Tube Size)

**FW0002-40** (4.0" Tube Size)

**FW0002-45** (4.5" Tube Size)

Double axis tube type and box type gooseneck installations.